

THE HARD HAT NEWS

**NASHVILLE
ELECTRIC
SERVICE
11TH AVE SUBSTATION
& PARKING GARAGE**

ISSUE 02 // AUGUST 2020



T.W. FRIERSON

NASHVILLE CONTRACTOR, INC. TENNESSEE

CONTENTS

AUGUST 2020

Updates & Announcements 04

TWF COVID Task Force Update 05

Employee Spotlight 08
Norma Harris, Receptionist

Composites Ones 09
Recently Completed Project!

Safety & ESOP Updates 14

Client Shout Outs! 15
AME Church, NES & CDE Lightband

06

Featured Projects

We strive to be more than just a construction company. Guided by an entrepreneurial spirit and innovative thinking, we are creating a foundation for people to thrive. We build mutually beneficial partnerships that uplift our community and are committed to delivering award-winning projects that exceed expectations.



Hamilton Creek Commerce Park
Nashville, Tennessee

Dickson County Justice Center
Charlotte, Tennessee



16

Focus on the Field

With client needs so diverse, we offer a full range of construction management, and design-build services. Our team of employee-owners combines highly skilled supervision, efficient construction methods, and accountable project management solutions to get the job done in the best possible way for our partners.

11

Charlie Irwin Paint Blast Shop

The new Blast building will allow one CIP team to blast steel, while another team applies protective coatings in the Paint shop. The new building will also decrease the amount of Blast media used during a calendar year and reduce diesel consumption since the air compressor is electric. This will make for a much more efficient and eco-friendly blasting environment.



12

Design Constructors, Inc.
Minth Group Chrome & Mold Building



Mark Your Calendars!



TWF 20th Annual Golf Tournament
August 31, 2020
@ Hermitage Golf Course

4:13 Strong Golf Tournament
October 3, 2020
*Email Sara Waggoner for details

TWF Monthly Town Hall
September 2, 2020
October 7, 2020
9:00 - 10:00AM



JOIN OUR TEAM!

At T.W. Frierson Contractor, Inc. we're always searching for hard working, talented team members who share our corporate values. We believe one of the best indicators of how well a company treats its employees is longevity. The average tenure of the office staff is close to 11 years, while the Superintendent's average tenure approaches 11 years- not many other construction companies can say this. As an employee owned company, you'll own a piece of the company- whether you work in the office or the field. For consideration, please apply by clicking on the desired job opening below. T.W. Frierson Contractor, Inc. is a Drug-Free Workplace and uses E-Verify.

Current Opening:
Concrete Superintendent



UPDATES & ANNOUNCEMENTS

WELCOME TO T.W. FRIERSON CONTRACTOR, INC.!

Zayne Watson - Ironworker, DSB

Kevin Grant - Carpenter, PCS

Bart Martin - Laborer, DSB

Wilbur Reaves - Laborer, DSB

Brandon Galvez - Laborer, DSB

Torrence Moore (rehired) - Laborer, DSB

Nery Trujillo-Mondragon - Laborer, DSB

Dylan Lefebvre - Equipment Operator, PCS

Rafael Roman - Carpenter, PCS

Edgar Paiz (rehired) - Laborer, DSB

Danzel King - Laborer, DSB

Joshua Lockhart Laborer, DSB

Sean Vinci - Ironworker, DSB

Nicholas Simmons - Laborer, PCS

Cassandra Salazar - Laborer, DSB

Ian Sexter - Laborer, DSB

CONGRATULATIONS ON YOUR PROMOTIONS!



Tory Rice
DSB PROJECT
MANAGER



Myles Ayers
PROJECT
MANAGER



Lauren Carter
ASSISTANT
PROJECT MANAGER



Jack Barrett
SENIOR PROJECT
MANAGER



Tim Blakeney
SUPERINTENDENT



Cole Baker
FOREMAN

COVID-19 TASK FORCE

In response to the COVID-19 pandemic, T.W. Frierson has set up a task force. This group meets three times each week and closely monitors the rapidly changing policies and regulations regarding COVID-19. The group is also responsible for developing and implementing company policy, ensuring we follow the most up to date CDC and OSHA recommendations/guidelines.

If you have any questions regarding T.W. Frierson's COVID-19 Policies and/or Procedures please reach out to one of the members of our Task Force.



Nathan Heppler, EHS Manager
nheppler@twfrierson.com



Matt Taylor, Vice President of Operations
mtaylor@twfrierson.com



Kit Ozburn, Vice President
kozburn@twfrierson.com



Bronwyn Wilson, Human Resources Manager
bwilson@twfrierson.com



Sara Waggoner, Director of Marketing & Client Relations
swaggoner@twfrierson.com



Mike Melnyk, CFO
mmelnyk@twfrierson.com



Eric Davis, CHST
EHS SPECIALIST

Please join us in congratulating Eric Davis on completing his Construction Health & Safety Technician (CHST) certification!



Lee Ann Watson, CIS
PROJECT MANAGEMENT ASSISTANT
Please join us in congratulating Lee Ann Watson on completing her Construction Industry Specialist (CIS) certification!

WHICH TWF CORE VALUE RESONATES THE MOST WITH YOU?

TREAT OTHERS LIKE FAMILY



GRIFFIN JONES SUPERINTENDENT

"Treating others like family would be the one that resonates with me the most. The most recent experience of that is the great relationships we created at Hormann with new subcontractors the we have never worked with before and creating that family relationship with a great owner. Having those relationships made the job a lot less stressful and made it enjoyable to go to work everyday."

Featured Projects



3040 Sidco Adaptive Reuse | Nashville, Tennessee

Project Size 204,000 Square Feet **Contract Value** \$15,824,000

Architect Design Constructors, Inc. **Anticipated Completion** Q1 2021

This project consists of converting an existing 130,000 square foot warehouse into approximately 160,000 square feet of Class-A creative office spaces. The project includes a new entry feature and a full range of best-in-class amenities including a fitness center with locker rooms, a coffee bar, a game room, collaborative meeting spaces, and an indoor/outdoor plaza.

A terrace style stair will connect the main level to a new 25,665 square foot second floor structure, and will be used for collaboration or leisure space. The existing basement will be used for parking, and will supplement the new two-story 68,609 square foot parking deck that will be added to the site.

This project will be challenging because the existing warehouse is uninsulated and does not have air conditioning. Significant structural modifications will need to be incorporated to the design, including the demolition of equipment mezzanines and CMU offices.

Project Team

Craig Polancich, Project Architect; Jorge Leal, Superintendent; Eric Bowman, Project Manager; Myles Ayers, Project Manager; Lee Ann Watson, Project Management Assistant; Ray Woodby, DSB Superintendent, Thomas Coots, DSB Project Manager; Sara Proctor, DSB Project Engineer; Jeff Smith, PCS Superintendent; Preston Hall, PCS Project Manager; Lisa Sanford, PCS PProject Management Assistant

Dickson County Justice Center

Charlotte, Tennessee

Project Size 63,380 Square Feet

Contract Value \$23,000,000

Architect HFR Design, Inc.

Anticipated Completion Q4 2020

Project Team

Tommy Manley, Superintendent
Nick Pulley, Assistant Superintendent
John French, Sr. Project Manager
Lisa Sanford, Project Management Assistant

The new state-of-the-art justice center for Dickson County will boast approximately 63,000 SF of secure holding areas, multiple courtrooms, judicial business meeting rooms, and public spaces with various high-end finishes. The new building design mimics the existing courthouse on the town square. By utilizing a similar style brick, cast stone, and intricate exterior detailing, the design & construction brings a timeless visual element to the building.



Archer Datacenters Core & Shell

Gallatin, Tennessee

Project Size 82,500 Square Feet

Contract Value \$6,208,000

Architect DLB Associates Engineers, LLC

Anticipated Completion Q4 2020

Project Team

Joshua Hurst, Superintendent
Myles Ayers, Project Manager
Lee Ann Watson, Project Management Assistant

This facility will feature approximately 55,000 square foot data hall that is expected to facilitate up to 5MW of critical IT load, expandable to close to 10MW. The building can be replicated up to three times on the roughly 30-acre site, and Archer has secured a right of first refusal on an additional 30 acres adjacent to the site. The greenfield parcel has an adjacent electrical substation with minimal existing use.



Hamilton Creek Commerce Park

Nashville, Tennessee

Project Size 362,000 Square Feet

Contract Value \$27,669,300

Architect Design Constructors, Inc.

Anticipated Completion Q2 2021

Project Team

Ben Carraway, Project Coordinator; Donnie Patterson, Superintendent; Jay Earney, Superintendent; Jack Barrett, Sr. Project Manager; Lee Ann Watson, Project Management Assistant; Trent Robinson, DSB Superintendent; Matthew Howell, DSB Project Manager; Sara Proctor, DSB Project Engineer

This design-build project by T.W. Frierson and Design Constructors, Inc., is a new offering to Nashville's high-demand industrial market. We broke ground on the 362,000 square foot master-planned project in October 2019.

Hamilton Creek Commerce Park calls for four Class A distribution buildings. The smallest structure is set to include 55,800 square feet, while the largest will encompass 160,000 square feet. Two buildings, totaling 71,200 square feet and 75,000 square feet, respectively, are also in the works. Situated at 2737 Couchville Pike, the property will be primed to accommodate last-mile delivery, given its location near two interstates and just 5 miles from Nashville International Airport.

Employee Spotlight



NORMA HARRIS
RECEPTIONIST

Hometown: Nashville, TN

Are you a morning or night person? I am a morning person. My internal alarm goes off at 4:30AM.

Share one thing most people here don't know about you:
I am an avid motorcycle rider and I've been riding since I was 16 years old.

What was your nickname growing up, or now?
Stormy Norma

If you could only eat one thing for a year, what would it be?
Probably pizza. That's the one thing that I could see myself eating for breakfast, lunch, and dinner.

If you had to describe yourself in three words, what would it be?
1. **DEPENDABLE**
2. *Kind*
3. **HONEST**

My biggest pet peeve is...
Dishonesty

What is your favorite guilty pleasure? Crème Brulee

If you could visit any place in the world, where would you choose to go and why?
Australia – I would like to see the Koala Bears in their natural habitat.

What was the first car you drove? Renault Alliance

What was the best concert you went to? Prince Musicology Tour 2004

What was your first job where you got paid by someone other than your parents?
I worked for the Summer Youth Program at Watkins Park Community Center passing out free lunches.

COMPOSITES ONE

Project Completion



PROJECT SIZE	CONTRACT VALUE	% SELF PERFORMED
80,000 Square Feet	\$8,474,250	39%
PROJECT DURATION	ARCHITECT	MAN HOURS
10 Months	Simonson & Associates	10,022 (ZERO Injuries)

ABOUT COMPOSITES ONE
Composites One is the largest distributor of composites materials in North America. They offer the industry's widest range of reinforcements, resins, gel coats, catalysts, core materials, shop supplies and process equipment, including more specialized lines than any other distributor. With more than 41 distribution centers nationwide, they serve more than 9,000 customers in a variety of markets, including marine, aerospace, wind energy, marble/solid surface, construction, and advanced composites.

PROJECT FEATURES & CHALLENGES
This 80,000 square foot facility features a conventional foundation and structural system, with insulated tilt-up panels and a 60 mil TPO roof. This facility was specifically designed to house hazardous materials in the 76,500 square foot warehouse. TWF's concrete division, *Professional Concrete Solutions, LLC*, self-performed 35% of this project by completing the building and site concrete package.

INSULATED TILT-UP PANELS
The biggest challenge on this project was the construction of the insulated tilt-up panels, as TWF had not previously done them. These panels were specified because of their effectiveness to control the climate within the warehouse space for the storage of Composites One's materials.

The process of constructing the insulated panels is much more cumbersome than normal tilt-up, as it requires several additional steps. The panels took longer than expected, requiring our workers to work long days and weekends. We also coordinated with the subcontractors to send out additional crews as needed in order to complete this project on time.

PROJECT TEAM
Jeff Waggoner, Superintendent; Eric Bowman, Project Manager; Lee Ann Watson, Project Manager Assistant; Jeff Smith, PCS Superintendent; Preston Hall, PCS Project Manager

WHICH TWF CORE VALUE RESONATES THE MOST WITH YOU?

4 AM DOUGHNUTS

JAMIE HOLMES MARKETING & COMMUNICATIONS MANAGER



"The core value that resonates most with me is **4 AM Donuts**. I think all our TWF family members do a great job of showing each other appreciation and recognizing each other for their contributions to our success as a company. This is apparent among our leadership team and how they consistently recognize the outstanding work of our field teams, always pointing out if it weren't for their incredible customer service and craftsmanship, we would not be the amazing company we are today. I also think our people are incredibly humble – whenever someone is recognized for something they did, you often hear them saying they couldn't have done it without several other people's help and they pass the credit along to others."

"IT IS CLEAR [THE PROJECT MANAGER AND SUPERINTENDENT] HAVE GOOD AND SOLID RELATIONSHIPS WITH THE SUBCONTRACTORS. THEY TOOK AMAZING CARE OF OUR PROJECT, PUTTING IN THE EXTRA TIME WHEN NEEDED TO KEEP IT MOVING... WHEN WE INTERVIEWED TWF LAST YEAR, WE INDICATED HOW IMPORTANT COMMUNICATION WAS TO US. I WAS ALWAYS IN THE LOOP AND THEY MADE THE PROJECT EASY FOR ME. WE WILL GLADLY DO BUSINESS IN THE FUTURE WITH TWF!"

- KENDRA ROGOCKI, STANTINE PROPERTIES (OWNER) -



Charlie Irwin Paint Blast Shop

TWF PROJECT TEAM

Randy Lane, Superintendent
Chuck Hall, Project Manager
Lauren Carter, Assistant Project Manager

Lee Ann Watson, Project Management Assistant
Matt Self, PCS Superintendent
Preston Hall, PCS Project Manager

Alan Quam, DSB Superintendent
Thomas Coots, DSB Project Manager
Steve Jasinski, Project Designer

WHAT ARE THE CAPABILITIES OF THE NEW SHOP?

The new shop will feature state of the art lighting, ventilation, dust collection and recycling of spent media. The new blast system will allow CIP to switch from coal slag abrasives that cannot be recycled, to steel shot abrasives that can be recycled.

The blast building incorporates recessed augers, in the floor, to gather spent media. The spent media is gathered, sorted and cleaned automatically for re-use in a continual closed loop system. Additionally, the compressed air used for blasting operations was updated from diesel powered compressors to electric compressors. Electrical compressors provide a vast improvement in blast air quality, greatly reduce their carbon footprint and are more cost efficient to operate than their diesel counterparts.

Overall, the new blast shop will allow one team to blast steel, while another team applies protective coatings in the paint shop. Additionally, the new space allows CIP to handle larger and more complicated pieces of steel and increases the quantity of steel members they can blast and paint. The new blast recovery system provides better control quality and improves efficiency in handling and moving pieces through their operations. The new facility also provides an Eco-friendly blasting environment; switching to an electric air compressor has allowed CIP to significantly decrease their diesel consumption, and the updated technology aids in decreasing the amount of Blast media used during a calendar year.

In summary, the new blast shop dramatically increases safety, production, quality and reduces spent media – thus, greatly reducing the disposal costs associated with spent media.

Want to learn more about what CIP's services and what they can do for you? Visit their website at www.cipaint.com



CONTACT

Phone: 615.790.8822
Email: info@cipaint.com



"WORKING WITH TWF HAS BEEN A PLEASURE FROM THE EARLY STAGES OF PRELIMINARY DESIGN TO THE COMPLETION OF THE PROJECT. WHILE WE HAVE WORKED FOR TWF, ON MULTIPLE PROJECTS AS A SUBCONTRACTOR, THIS WAS OUR FIRST OPPORTUNITY TO WORK WITH THEM AS A OWNER. WHEN I WENT TO BEN EBERLE, EARLY ON IN THE PROCESS, I WASN'T EXACTLY SURE OF WHAT WE WANTED TO BUILD AND HOW WE WANTED IT TO LOOK. THE BUILDING THEY BUILT FOR US IS VERY UNIQUE IN SHAPE AND FUNCTION. THE TWF TEAM WALKED US THROUGH EVERY STEP OF THE PROCESS, ALWAYS LOOKING OUT FOR OUR BEST INTEREST AND ENSURING THAT WE WOULD HAVE THE BEST FACILITY POSSIBLE, ALL WHILE WORKING IN OUR BUDGET. DURING THE PRE-CONSTRUCTION/ DESIGN PHASE, DOUG READER WAS ADAMANT THAT EVERY DETAIL BE CORRECT. WHEN WE COULDN'T GET DETAILED DESIGN CRITERIA FROM OUR EQUIPMENT VENDORS OR INDUSTRY STANDARDS ON REQUIRED LIGHTING FOR THE BLAST BUILDINGS, DOUG WENT OUT OF HIS WAY TO RESEARCH AND GATHER NECESSARY INFORMATION TO ENSURE THAT OUR OPERATIONS WOULD BE 'WELL-LIT.'"

- CHARLIE IRWIN, JR., CIP PRESIDENT

SUBCONTRACTORS AS CLIENTS: *The List Keeps on Growing!*



LAMPLEY CONSTRUCTION



T.W. Frierson Contractor, Inc. has worked in Nashville since 1958 and has established relationships with local subcontractors and suppliers. It is widely recognized that T.W. Frierson Contractor, Inc.'s reputation in the subcontractor market is among the most highly regarded in our industry. Simply stated, we pay our partners on time, treat them fairly and with respect and have the highest ethics in procuring their partnerships.



DESIGN CONSTRUCTORS, INC. TEAM

Sean Foote, Director of Architecture
Tommy Brown, AIA, LEED AP, Project Architect
Steve Jasinski, Project Coordinator
Ben Carraway, Project Coordinator
Craig Polancich, Project Architect
Kandace K. Mallory, LEED AP, Project Designer

Design Constructors, Inc. is TWF's in-house architectural firm that engages in a wide range of commercial, distribution, industrial, tenant improvement, and site development projects. Having been involved in the Design-Build method of project delivery since 1993, DCi has become an industry leader in the intense collaboration of all Design-Build endeavors.

Balancing the critical elements of design qualities, project schedule, and cost to suit the specific criteria of the client is paramount to our purpose. We possess the in-house expertise to coordinate design elements while monitoring the client's needs to maintain stringent control over project delivery and cost.



Minth is a global company that has become a “leading supplier in design, manufacturing, and sales of body structural parts, trims, and decorative parts for passenger vehicles.”

This facility consists of 244,500 square feet of manufacturing, office, and lab space in Lewisburg, TN. The building is a Butler Manufacturing Pre-Engineered Metal Building with an MR24 roof system.

The manufacturing space in this facility will be utilized as a new ‘Mold, Chrome, and Paint’ facility that produces plastic injection molded grille assemblies for cars and trucks.

The process areas of the building include injection molding, chroming/plating, spray paint, assembly, water treatment, and warehouse/shipping.

Weekly coordination calls have been essential as this project continues to develop. The the Minth teams in China and the US, along with DCi and T.W. Frierson have been participating in these weekly calls to communicate essential information from the owner's equipment suppliers and vendors.

All in all, this is an excellent example of a challenging industrial and heavy process project for a foreign client – right in the DCi and T.W. Frierson wheelhouse.

Project Team:

Craig Polancich, Project Architect
Bill Thrasher, Superintendent
Tim Blakeney, Superintendent
Luke Maddox, Sr. Project Manager
Lisa Sanford, Project Management Assistant
Alan Quam, DSB Superintendent
Thomas Coots, DSB Project Manager
Sara Proctor, DSB Project Engineer



WHICH TWF CORE VALUE RESONATES THE MOST WITH YOU?

DIG THE PIT

JERRY BLURTON ASSISTANT SUPERINTENDENT

"It's hard to pick just one of our core values because they all play a vital role in and out of work. They go hand in hand with each other, one complimenting the other to make the job go more smoothly. For our clients, our workers (including our subs) and of course TWF as a whole.

If I have to choose one, I would say digging the pit resonates most with me. Everything starts with a foundation. Without a solid foundation, whatever you are doing will fail. So you have to roll up your sleeves and get to work to make sure the "pit" is laid out and dug properly. Doing the things nobody else wants to do. Finding a way. When it seems there is no way, sitting down with your team and finding a way to get it done. Getting up earlier to make sure you get to the job first, being ready to jump in the ditch and work beside your guys hand in hand, staying late, working weekends, doing whatever it takes to make sure the job is done and done safe & correct. Digging the pit sets the tone for how the rest of the job will go. And it sets the stage for work in the future with our clients. To me there is nothing that can out do hard work. And that's what digging the pit is. Just all out hard work!"



Safety Update



2019
PLATINUM
AWARD

Founded in 1989 as a safety benchmarking and improvement tool, STEP has evolved into a world-class safety management system that dramatically improves safety performance among participants. T.W. Frierson was measured on our safety processes and policies on 24 key components through a detailed questionnaire and received a Platinum Level Award for 2019! For more information on the STEP program visit: www.abcstep.org



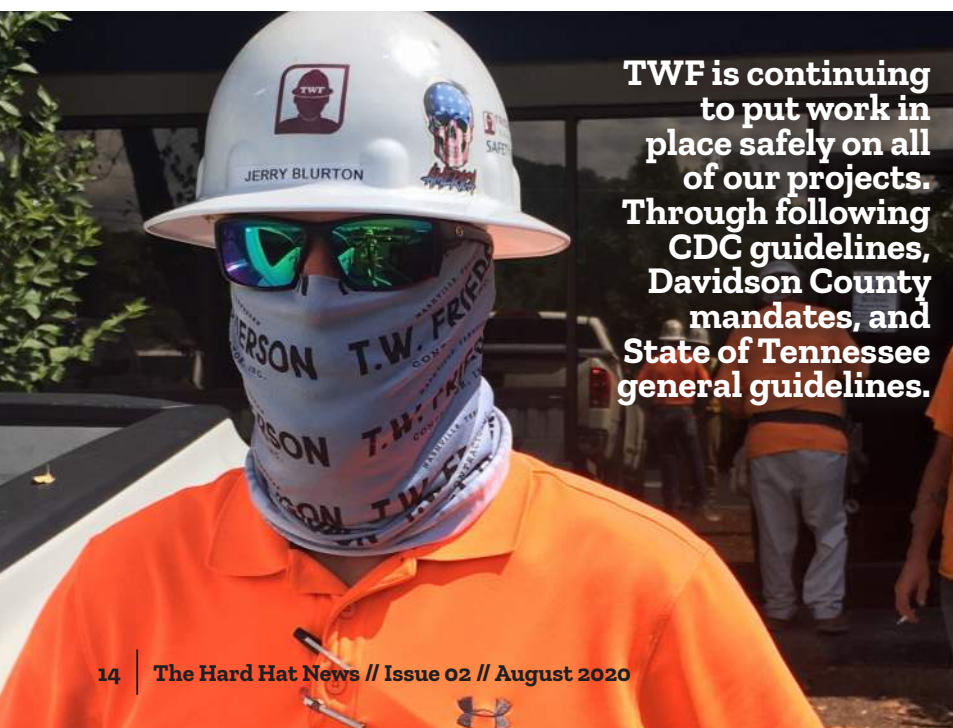
The ESOP Committee missed getting to see everyone these last few months, and has enjoyed getting back out and talking all things ESOP! With safety in mind, we have made a few small changes to ESOP jobsite visits:

- We provide box lunches.
- We follow all current jobsite procedures related to Covid 19 (screening questions, etc.)
- We do not congregate in the jobsite trailers.
- We either meet outside, or in a space large enough to maintain social distancing

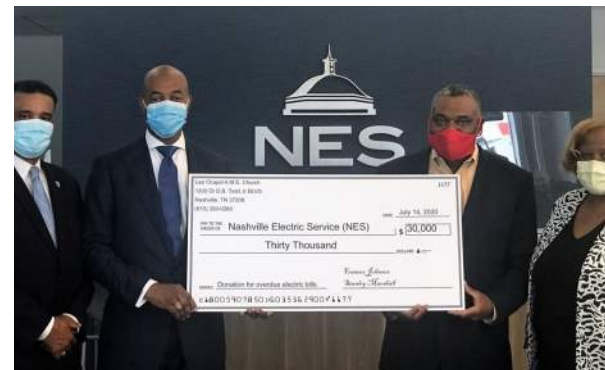
Basically, a friendly lunch drop off, with the availability to answer any questions that anyone may have! In the meantime, if you have any questions, please email ESOP@twfrierson.com.

So far, we've visited Airtech, Best Brands, Furniture Connection, Steve Ward & Associates, Minth, and the TWF Shop.

TWF is continuing to put work in place safely on all of our projects. Through following CDC guidelines, Davidson County mandates, and State of Tennessee general guidelines.



Client Shout Outs!



A north Nashville church is giving back to Nashville Electric Service customers in the community by covering \$30,000 in past due balances for victims of the March 3 tornado.

Lee Chapel AME Church presented a check to NES which wiped out past due balances for nearly 100 customers in their community.

"Lee Chapel African Methodist Episcopal Church was blessed to receive so many donations from the community to provide assistance to those affected the March tornado," said Rev. Harold M. Love, Jr., PhD. "We hope this use of funds will enable these residents to continue on their road to recovery and rebuilding."

Church representatives worked closely with NES to identify the customers in need of assistance. The check presentation took place at NES on July 24.



CDE Lighthand General Manager Brian Taylor receives Individual Achievement Award! The award recognizes individuals who have made significant contributions to the electric utility industry and to public power.

Brian has been dedicated to CDE Lighthand and electric utilities for 38 years. He has a wide range of experience and knowledge that has helped him lead the organization and the many associations with which he is involved.

He played a key role in taking CDE Lighthand into the broadband business and through dedication and focus he was able to grow a struggling business to one that is successful and well led. He has led a thriving organization that is known as a premier leader in the AMI, SCADA and other utility best practices that many other organizations model themselves after.

Brian is a tireless advocate for all things and all people in the electric utility world. He is dedicated to not only his employees but works to represent all industry employees. Brian's leadership in the industry serves as an example for many young leaders entering the industry, and he has become a strong mentor to many of them.

WHICH TWF CORE VALUE RESONATES THE MOST WITH YOU?

TEAR OUT THE CONCRETE

MICHAEL MASSEY VICE PRESIDENT - FIELD OPERATIONS

"We pitch to our clients that we are best in class. That means that we are committed to giving them a flawless product (or as near flawless as possible).

To sustain such a reputation does not allow for us to deliberately give a client something that is less than what they pay for. That said, if we make a mistake, we are committed to making it right if it means we tear it out at our expense and put it back correctly.

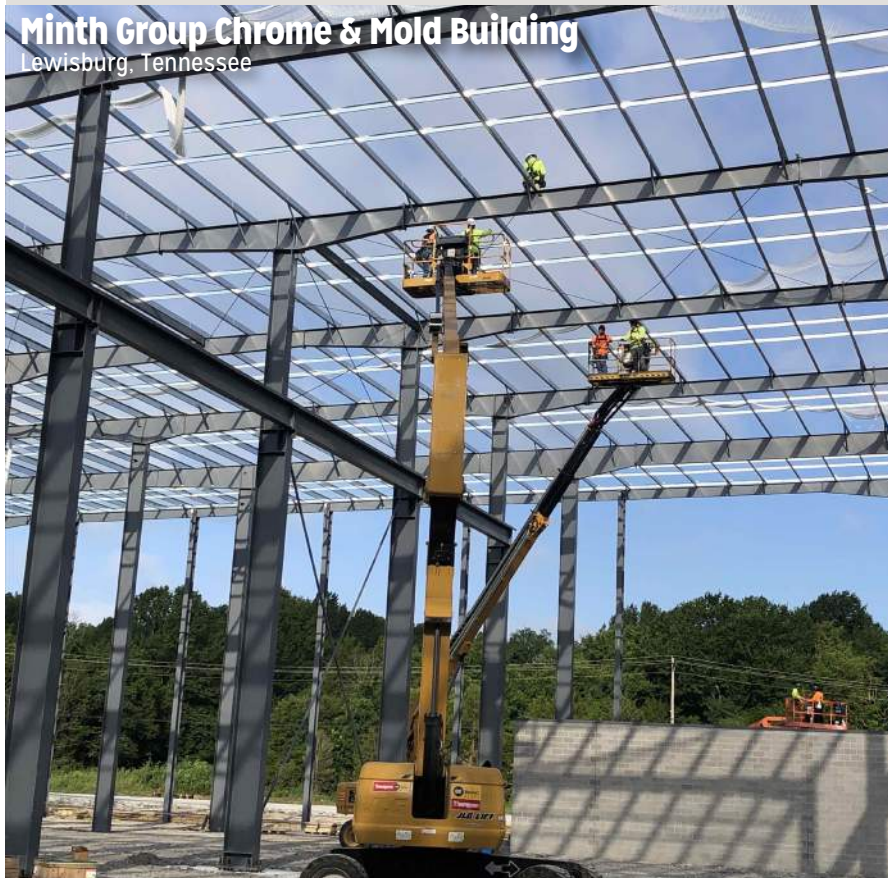
Many years ago, while working for Ray Lane I remember him asking me 'Would you have that at your house?' If the response was 'no,' I understood that the work would be re-done. With that said I have tried to adopt and instill the need to do it right the first time, and if it's wrong, the client should not suffer our mistake.

We have an obligation to give the client a product that we would be proud to show off at our house."



FOCUS ON THE FIELD

With client needs so diverse, we offer a full range of construction management, and design-build services. Our team of employee-owners combines highly skilled supervision, efficient construction methods, and accountable project management solutions to get the job done in the best possible way for our partners.



Minth Group Chrome & Mold Building
Lewisburg, Tennessee



3040 SIDCO ADAPTIVE REUSE | NASHVILLE, TN

Jorge Leal, Superintendent
Eric Bowman, Project Manager
Myles Ayers, Project Manager
Lee Ann Watson, Project Management Assistant
DSB Ray Woodby, DSB Superintendent,
Thomas Coots, DSB Project Manager
Sara Proctor, DSB Project Engineer
PCS Jeff Smith, PCS Superintendent
Preston Hall, PCS Project Manager
Lisa Sanford, PCS Project Management Assistant



ADVANCED PLASTICS TORNADO REPAIRS | NASHVILLE, TN

Randy Lane, Superintendent
Andy Zimmerman, Sr. Project Manager
Lee Ann Watson, Project Management Assistant
DSB Ray Woodby, DSB Superintendent
Matthew Howell, DSB Project Manager
Sara Proctor, DSB Project Engineer
PCS Jeff Smith, PCS Superintendent
Preston Hall, PCS Project Manager
Lisa Sanford, PCS Project Management Assistant



AIRTECH PHASE IV EXPANSION | SPRINGFIELD, TN

Cliff Manley, Superintendent
Jack Barrett, Sr. Project Manager
Lee Ann Watson, Project Management Assistant
DSB Julio Pineda, DSB Superintendent
Tory Rice, DSB Project Manager
Sara Proctor, DSB Project Engineer
PCS Josh Smith, PCS Superintendent
Preston Hall, PCS Project Manager
Lisa Sanford, PCS Project Management Assistant



ARCHER DATACENTERS | GALLATIN, TN

Shannon Patterson, Superintendent
Myles Ayers, Project Manager
Lee Ann Watson, Project Management Assistant

AMEC PUBLISHING | NASHVILLE, TN

Griffin Jones, Superintendent
Jack Barrett, Sr. Project Manager
Josh Smith, PCS Superintendent
Preston Hall, PCS Project Manager
Lisa Sanford, Project Management Assistant



BEST BRANDS TORNADO REPAIRS NASHVILLE, TN

Scott Peterson, Superintendent
Andy Zimmerman, Sr. Project Manager
Lee Ann Watson, Project Management Assistant
DSB Ray Woodby, DSB Superintendent
Matthew Howell, DSB Project Manager
Sara Proctor, DSB Project Engineer
PCS Jeff Smith, PCS Superintendent
Preston Hall, PCS Project Manager



CDE LIGHTBAND RENOVATION & ADDITION CLARKSVILLE, TN

Joe Slate, Superintendent
Andy Zimmerman, Senior Project Manager
Lee Ann Watson, Project Management Assistant
PCS Matt Self, PCS Superintendent
Preston Hall, PCS Project Manager
Lisa Sanford, PCS Project Manager Assistant



CENTRAL WASTEWATER TREATMENT PLANT NASHVILLE, TN

Tony Tidwell, Superintendent
Myles Ayers, Project Manager
Lee Ann Watson, Project Management Assistant



3040 Sidco Adaptive Reuse
Nashville, Tennessee



DICKSON COUNTY JUSTICE CENTER CHARLOTTE, TN

Tommy Manley, Superintendent
Nick Pulley, Assistant Superintendent
John French, Sr. Project Manager
Lisa Sanford, Project Management Assistant



FURNITURE CONNECTION | CLARKSVILLE, TN

Tony Campos, Superintendent
Andy Zimmerman, Senior Project Manager
Lee Ann Watson, Project Management Assistant
DSB Julio Pineda, DSB Superintendent
Tory Rice, DSB Project Manager
Sara Proctor, DSB Project Engineer
PCS Richard Hayes, PCS Superintendent
Preston Hall, PCS Project Manager
Lisa Sanford, PCS Project Management Assistant



HAMILTON CREEK COMMERCE PARK | NASHVILLE, TN

Donnie Patterson, Superintendent
Jay Earney, Superintendent
Jack Barrett, Sr. Project Manager
Lee Ann Watson, Project Management Assistant
DSB Trent Robinson, DSB Superintendent
Matthew Howell, DSB Project Manager
Sara Proctor, DSB Project Engineer



MINTH GROUP CHROME & MOLD BUILDING LEWISBURG, TN

Bill Thrasher, Superintendent
Tim Blakeney, Superintendent
Luke Maddox, Sr. Project Manager
Lisa Sanford, Project Management Assistant
DSB Alan Quam, DSB Superintendent
Thomas Coots, DSB Project Manager
Sara Proctor, DSB Project Engineer



NES 11TH AVE SUBSTATION & PARKING EXPANSION NASHVILLE, TN

Joshua Hurst, Superintendent
Chuck Hall, Project Manager
Lee Ann Watson, Project Management Assistant



STEVE WARD & ASSOCIATES TORNADO REPAIR NASHVILLE, TN

Jerry Blurton, Superintendent
Chuck Hall, Sr. Project Manager
Lee Ann Watson, Project Manager Assistant
DSB Ray Woodby, DSB Superintendent
Tory Rice, DSB Project Manager
Sara Proctor, DSB Project Engineer

HAVE YOU NOTICED SOMEONE LIVING OUR CORE VALUES? **WANT TO GIVE THEM A SHOUT OUT?!**

To share your story, email Sara Waggoner at swaggoner@twfrierson.com

People are at the heart of T.W. Frierson. We work hard because we're accountable to one another. We don't just build buildings, we build careers and create meaningful relationships — we **treat others like family**.

TREAT OTHERS LIKE FAMILY

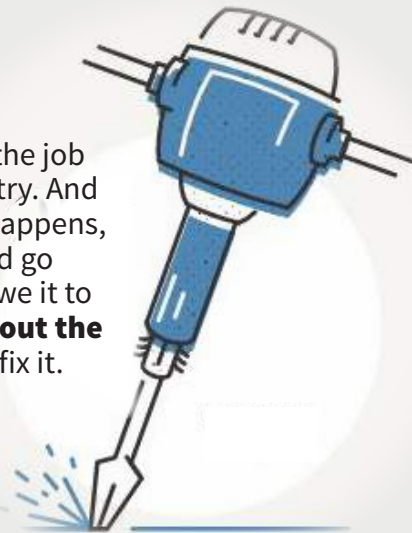


"That's not my job" isn't in our vocabulary. Each person does what it takes to get the job done right. Regardless of rank or tenure, if the pit needs digging, you **dig the pit**.



We always go the extra mile to show appreciation and gratitude. Small gestures, like delivering **4am doughnuts** for an early morning concrete pour, make a big difference.

We strive to do the job right on the first try. And when a mistake happens, even if it could go unnoticed, we owe it to our team to **tear out the concrete** and fix it.



We're responsible for the experience we create.

While some people prefer to "roll out the red carpet" for a select few, we like to **clear the sidewalk** for everyone.



T.W. FRIERSON
CONTRACTOR, INC.

2971 Kraft Drive • Nashville, Tennessee 37204
615.367.1333 • www.twfrierson.com • @twfrierson