

THE HARD HAT NEWS

Feature Story

**TWF
EMPLOYS
UNIQUE
BUILDING
METHODS
AT THE NEW
HÖRMANN
FACILITY**

ISSUE 02 // AUGUST 2019



CONTENTS

AUGUST 2019

Updates & Announcements New Employees, Promotions & Upcoming Events	05
ESOP Committee Update New Committee Members, Upcoming Events & 3rd Year of ESOP in the books!	10
Safety Update SiteHawk: Chemical Data Management Software	12
Employee Spotlight Jerry Blurton, Assistant Superintendent	13
TWF 19th Annual Golf Tournament Recap & Charitable Giving Update TWF donates \$76,000+ to the American Heart Association	16
Employee Spotlight David Amond, Senior Project Manager	17
Tribute to Isiah James It is with heavy hearts that we say farewell to one of our TWF Family members	18
4:13 Strong Congratulations to the recent graduates!	19
Focus on the Field Current projects in-progress	20



Hormann, LLC
Sparta, TN

08

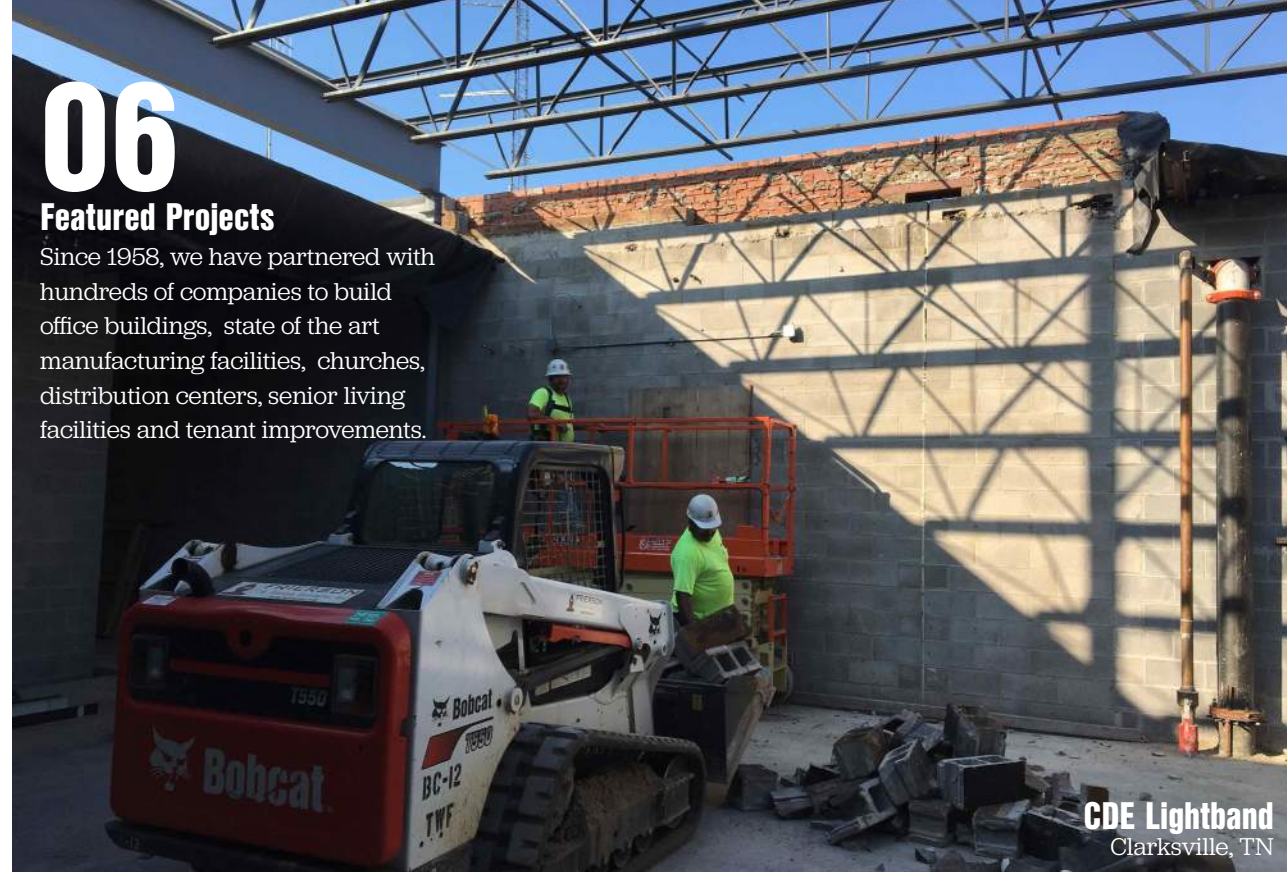
TWF employs unique building methods at the new Hormann facility

About 25 people gathered Saturday morning to witness a sight rarely seen in the Upper Cumberland - 30 exhaust fans being lifted by helicopter to the roof of the Hormann plant under construction next to the Upper Cumberland Regional Airport.

06

Featured Projects

Since 1958, we have partnered with hundreds of companies to build office buildings, state of the art manufacturing facilities, churches, distribution centers, senior living facilities and tenant improvements.



CDE Lightband
Clarksville, TN

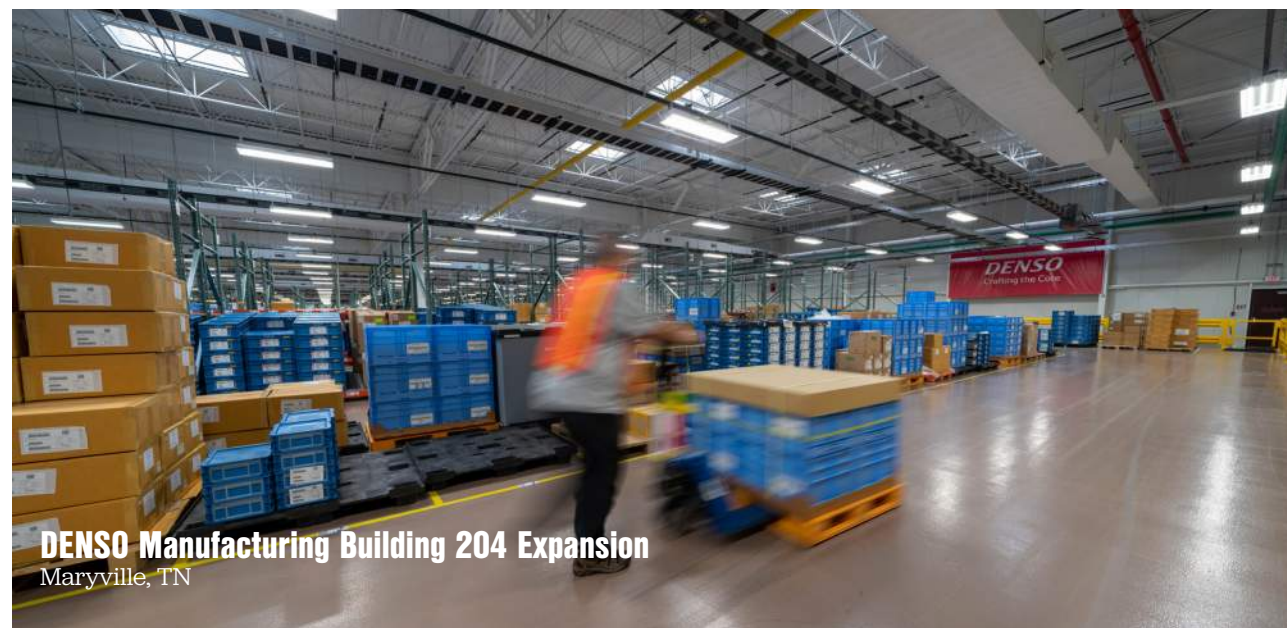
YAZOO BREWERY Madison, TN



14

Yazoo Brewery relocates to Madison, TN

To relocate brewing operations from their Gulch location in Nashville to the Madison suburb, the owners, Linus and Lila Hall, engaged T.W. Frierson Contractor, Inc. for the design-build project.



DENSO Manufacturing Building 204 Expansion
Maryville, TN



ESOP Update Provided by Dean Taylor, President

T.W. Frierson is nearing the end of our 3rd year as an ESOP. When we started down this path, we were excited that after many decades of being a closely held company, everyone will now have the opportunity to own a piece of T.W. Frierson. We believe that as an ESOP we will be able to provide additional growth opportunities for everyone and plant another seed to grow your retirement account. I am excited to say that our hopes are beginning to come true.

We have several people within the company that have dedicated much of their time to the ESOP and have become more knowledgeable of the program. Also, we owe our ESOP Committee a special thank you for the educational job site lunches and to the attendees for your excellent questions. We are all growing in our appreciation of the ESOP as we continue to educate each other on the numerous topics and benefits of this program.

Our company thrives for two reasons. We have excellent people who truly take pride in their work, and we have clients that appreciate that we are more than just another company that designs and builds a building. They appreciate that we are in this for long haul and work towards developing relationships that last years if not decades. Considering how much focus is on the future, the ESOP represents this thought pattern very well because it is a program designed to benefit each of us long term.

Thank you for all that you do to support our company.

NEW COLOROBIA FACILITY IS OPERATIONAL

“In the development of our project, we pleasantly realized that T.W. Frierson Contractor, Inc. is a company that is distinguished by its professionalism both in the development of the project as well as in its implementation. In addition to the simplicity and the human relationship by the executives that were responsible for the different stages of the project.”

- Arturo Salazar, President

Situated on a 14.5 acre site in the Highlands Business Park in Cookeville, TN, this new office, warehouse and production building represents Colorobbia's first US facility.

The new facility is comprised of 43,725 square feet of manufacturing space and 8,520 square feet of office space. Within the footprint, there are provisions for future manufacturing and laboratory space. Additionally, the site will allow for the building to nearly double in size allowing Colorobbia room to expand as their business grows.

Designed by our in-house architecture firm, Design Constructors, Inc., the building consists of conventional foundations with a Butler Manufacturing Pre-Engineered building structure, partial tilt-up concrete wall panel and partial insulated foam metal wall panel, and a Butler standing seam MR24 roof. The office has hard tile flooring throughout and a lot of exterior and interior glass to bring natural light into the workspace. Approximately 44% of this project was completed with T.W. Frierson's own employees, including the foundation, slab and tilt-up wall panels.

UPDATES & ANNOUNCEMENTS

WELCOME TO T.W. FRIERSON CONTRACTOR, INC.!

Lauren Carter
Project Engineer

Christian Conner
Shop Mechanic

David Amond
Senior Project Manager

Jerry Blurton
Assistant Superintendent

Larry Davis, Jr.
Carpenter

LeeAnn Watson
Project Manager Assistant

Josh Yoder
Pre-Construction Project Manager

Shane Fielder
DSB, LLC PEMB Installer

Adam Randolph
DSB, LLC Laborer

Luc Watson
Laborer

Myles Ayres
Assistant Project Manager

Jacob Jones
DSB, LLC Laborer

Bryan Tucker
DSB, LLC Laborer

Ray Eimerman
Assistant Superintendent

Ronnie Harris
DSB, LLC Laborer

Kevin Hoskins
DSB, LLC Laborer

Desmond Sykes
DSB, LLC Laborer



MARK YOUR CALENDARS:

CDE Lightband Topping Out
@ CDE Lightband Office
September 11, 2019
10:30AM - 1:00 PM

* Date subject to change - stay tuned!

TWF Open House
@ TWF Office
October 22, 2019
4:00 - 6:00 PM

Employee Celebration &
Bi-Annual Meeting
@ TWF Shop
November 12, 2019
11:00AM - 4:00PM



CONGRATULATIONS ON YOUR PROMOTION!



Please join us in congratulating Tony Tidwell on his promotion to Superintendent!

Tony is currently working in Huntingdon, TN on the Granges 11,000 square foot office expansion project.

Featured Projects



Signature Flight Hangars 4 & 7 Renovations and Expansion

Nashville, Tennessee

Project Size 20,000 Square Feet

Contract Value \$3,792,245

Architect Design Constructors, Inc.

Project Team

Dave Godbey, Superintendent

Chuck Hall, Project Manager

LeeAnn Watson, Project Manager Asst.

Sean Foote, Architect

This design-build project is a new 20,000 SF hangar with a 5,000 SF office for Signature Flight Support at Nashville International Airport. The building features a 140' x 28' hangar door and 33' eave height to accommodate a variety of Signature's aircraft.



NES 11th Ave Substation & Parking Expansion

Nashville, Tennessee

Project Size 41,000 Square Feet

Contract Value \$17,615,360

Architect Moody Nolan

Project Team

Jay Hill, Superintendent

Chuck Hall, Project Manager

Darlene Dwyer, Project Manager Asst.

This project consists of relocating NES's 10th Avenue Substation to the new location in the North Gulch. The substation will be attached to a 21,000 square foot parking deck and concealed with a decorative "privacy fence" designed to conceal the substation.

This project includes the demolition of the current site assets; a small concrete block building, a fueling station and surface parking for NES employees.

Composites One

Lebanon, Tennessee

Project Size 80,000 Square Feet

Contract Value \$8,234,215

Architect Simonson & Associates

Project Team

Jeff Waggoner, Superintendent

Eric Bowman, Project Manager

Preston Hall, PCS Project Manager

Darlene Dwyer, Project Manager Asst.

LeeAnn Watson, Project Manager Asst.

The project includes a new 80,000 square foot building that allows for a future 20,000 square foot expansion. The building will consist of one 40,000 square foot H-3, fire proofed space with recessed floors and spec space that can be divided into 20,000 square foot spaces.



American Wonder Porcelain Warehouse Expansion

Lebanon, Tennessee

Project Size 338,800 Square Feet

Contract Value \$11,709,500

Architect Design Constructors, Inc.

Project Team

Jeff Smith, Superintendent

Ray Woodby, DSB Superintendent

Preston Hall, PCS Project Manager

Matthew Howell, DSB Project Manager

Darlene Dwyer, Project Manager Asst.

Sara Proctor, DSB Project Engineer

Andy Zimmerman, Project Executive

Sean Foote, Architect

Approximately a year after production began, Wonder Porcelain was ready to expand their operations facility. This new project consists of a 351,560 square foot warehouse addition with 20 shipping docks, a 6,727 square foot finished pallet parking area, and a scrapped tile crushing area.

TWF EMPLOYS UNIQUE BUILDING METHODS AT THE NEW HÖRMANN FACILITY

“We're very excited about this... This is going to affect the citizens of White County for the next 50 to 60 years. I don't think people realize what a gem this is going to be for our community. It's a \$65 million investment. Even adjusted for inflation, this is the largest investment ever in White County.”

White County Mayor
Denny Wayne Robinson

About 25 people gathered the morning of August 10, 2019 to witness a sight rarely seen in the Upper Cumberland - 30 exhaust fans being lifted by helicopter to the roof of the Hormann plant that's under construction next to the Upper Cumberland Regional Airport.

“In my career, this is the second time I have had a helicopter lift, so it doesn't happen often,” said Brent Edwards, Senior Project Manager with T.W. Frierson Contractor, Inc. (TWF). “The first time was actually the StonePeak tile plant (in Crossville).”

The helicopter lift was coordinated by Jeb Stuart with Carwile Mechanical Contractors of Cookeville. It's not something Carwile typically does in the Upper Cumberland either. Stuart stated that this was the first one he remembered in the eight years he has worked for the company.

“It's typically more expensive to use a helicopter, but we do save a lot of man hours,” said Stuart. “I think from the time the helicopter took off until we set the final fan was 70 minutes, where if we had cranes, we would have been out there two long days maybe three days. It's more expensive but sometimes it makes more sense

Photo Credit: Brent Edwards
TWF Senior Project Manager

Story Credit: Michelle Price,
Upper Cumberland Business Journal
Managing Editor



depending on the building.”

Edwards explained that several reasons went into the choice of a helicopter lift for this project.

“The reason we did the heli-lift instead of using a crane is because of how close we are to the airport - we have to have a permit for our crane, and it's set at 199 feet. The mechanical contractor said they were going to need 280 feet,” said Edwards. “It was more difficult to go back to the FAA and amend the permit than it was to talk to Dean (Selby) over at the airport and get a heli-lift approved.”

The heli-lift required extensive coordination between Carwile and TWF. TWF was required to clear the site and remove any debris that could be blown about by the air from the rotors of the helicopter. They also had to have the trash dumpsters and porta potties removed so that they would not blow over.

The procedure for a heli-lift is still very labor intensive. “There were six people on the ground. Four hooking it up and one safety spotter and the guy talking to the pilot,” explained Griffin Jones, Frierson construction assistant superintendent. “There's six guys on the roof, four unhooking it and two

safety spotters. They are setting 30 exhaust fans on the roof with each taking between 2-3 minutes.”

Hormann is a German company that manufactures garage doors and the company is putting some of their innovative design style into their building.

“The office areas are in the pumpkin color and the plant will be blue,” said Edwards. “Those are the company colors for Hormann. It's 330,000 square feet with about 300,000 square feet of dedicated manufacturing space. There are five overhead bridge cranes in the building to help move coils of steel and some of the process equipment and there's a building behind featuring a water tank with a fire pump.”

We are working to get the facility enclosed within the next two months and having it completed by the end of February.

“We're very excited about this,” said White County Mayor Denny Wayne Robinson. “This is going to affect the citizens of White County for the next 50 to 60 years. I don't think people realize what a gem this is going to be for our community. It's a \$65 million investment. Even adjusted for inflation, this is the largest investment ever in White County.

Make sure to attend our 3rd Annual Employee Celebration to learn what this year's ESOP theme will be!



ESOP COMMITTEE UPDATE



Please join us in welcoming our new 2019-2020 ESOP Committee Members!

Tony Tidwell, Superintendent
Ray Woodby, DSB Superintendent
Dan Taylor, DSB Superintendent
Eric Davis, Field Safety Manager
Dave Godbey, Superintendent
Sara Proctor, DSB Project Engineer
Brett Chapman, IT
James Pitman, Pre-Construction
Sheila DeBord, Accounting
Sean Foot, DCi
Mike Melnyk, CFO
Sara Waggoner, Marketing & Business Development

We are thrilled to share that we received a tremendous amount of support and many people volunteered to serve on the committee. We had such a strong response that we have a 'wait list' for upcoming available spots for next year.

Thank you to everyone who volunteered to be a part of this exciting process!

The 2019-2020 ESOP Committee has been hard at work planning educational job site visits and preparing for our 3rd Annual Employee Celebration that will be held on November 12, 2019.

Over the last few months, the ESOP committee has been able to visit several job sites. This is a great time to develop relationships and learn more about our ESOP and how it will impact each of us. We encourage everyone to keep asking questions and sharing what you learn with each other.

If you have any questions or concerns related to the ESOP, please email esop@twfrierson.com

NEELY COBLE COMPANY CELEBRATES OPENING OF NEW FACILITY



“While it’s no secret that Nashville is growing at unprecedented rates, several Northern Alabama cities are also experiencing significant shift in population growth and business development. Neely Coble Company is excited to be a part of the growth with the development of a brand new 53,264 square foot heavy duty commercial truck dealership in Madison, Alabama.”



SAFETY UPDATE

750,000+
Man Hours Worked Since
Last Lost Time Injury



Beginning this fall, T.W. Frierson Contractor, Inc. will be introducing SiteHawk to our field supervisors and employees. SiteHawk is the global leader in Safety Data Sheets (SDS) and Chemical Data Management. This software and mobile application will help provide long-term compliance solutions for our field crews and will transform how we manage our chemical inventory and provide SDS to our employees.

Over the last several months TWF's EHS Department has been hard at work taking inventory of all the products we have on site at our various job sites and compiling them into SiteHawk. All employees will have instant access to SDS for all of our products as well as millions of others.

A feature of SiteHawk that we are really excited about on the mobile application is called QuickSCAN - this will allow you to scan the QR code on any product and access the SDS within seconds.

If you have any questions regarding SiteHawk and the planned roll-out, please contact Nathan Heppler at nheppler@twfrierson.com.

**Subcontractor Safety Meeting
at DENSO 204 Expansion
Maryville, Tennessee**

T.W. Frierson was determined to deliver the best possible product for their customer with an approach that was anchored, first and foremost, with developing a safe work environment. This foundation, along with the detailed project management, precise scheduling, and flawless execution, produced a top quality design-build solution ahead of schedule... A safe work environment is imperative and safety was the first topic of every progress meeting. Reminders of safe practices kept the job free of lost-time incidents and promoted efficiency."

Paul Throgmorton, Project Manager at Lakeland Electric on the Colorobbia Project in Cookeville, TN

Employee Spotlight



Jerry Blurton
Assistant Superintendent

Hometown: Jackson, TN

What do you enjoy most about your job? What I enjoy the most about my job is taking nothing and building the vision that someone had. Seeing the progress from bare bones to finish product day after day is very rewarding.

Are you a morning or night person? Morning for sure.

If you had to describe yourself in three words, what would it be? Honest, Reliable, & Dedicated

You were just given a yacht. What would you name it? Gettin' Warmed Up

If you could have one super human power, what would it be? To be able to teleport.

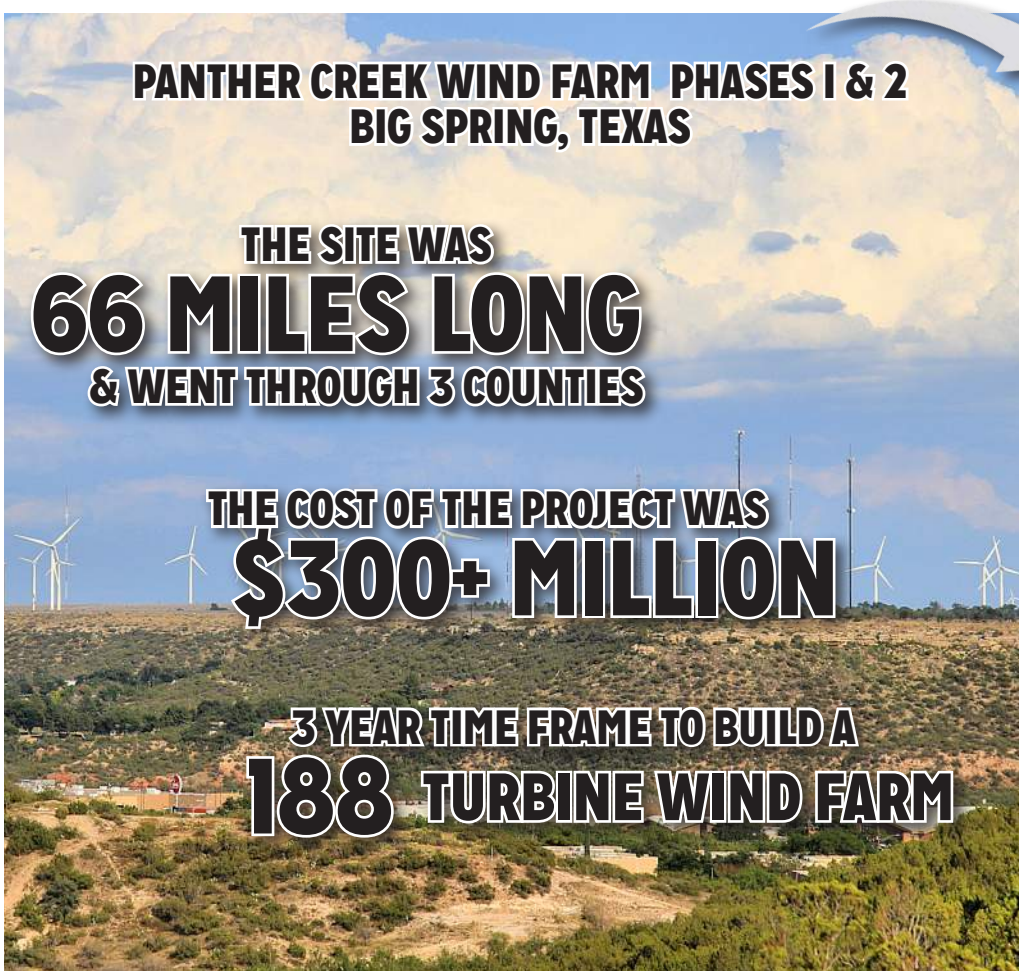
Who has been the biggest inspiration in your life? Why? Most definitely my dad. He was God fearing, hardworking, a family man and never gave up no matter what came his way. He instilled all of those things in me and I'm grateful he did.

What's your favorite line from any movie? I'm your huckleberry! (Tombstone)

What is your favorite sport, and which team of that sport do you cheer for? SEC Football, GO VOLS!!!!!!

If you had a "theme song" that played whenever you walked into a room full of people, what would it be? "The only way I know" ~ Jason Aldean

What was the coolest, or most challenging project you've worked on? Why? The coolest job I ever worked on was Panther Creek Wind Farm Phases 1 & 2 in Big Spring, TX. When we started breaking ground we were given a 3-year time frame to build the 188 turbine wind farm. I was the civil superintendent on the project. The site was 66 miles long from point to point, not counting string roads and went through 3 counties. Around February 2008 Eon climate and renewables, the owners, asked us what we needed to be done by the end of the year. They wanted their sub station turned over to the Texas power grid by January 1, 2009. We ended up working 7 days a week, 24 hours a day and turned the site over to them by Christmas of 2008. It was the biggest challenge I had gone up against at that point in my life but I worked with a really great team and I learned a lot from those guys. The cost of the project was \$300+ million.



Yazoo Brewing Company was originally founded as Nashville's first production brewery since prohibition, and to this day, they focus on distribution, sending their beer to different parts of Tennessee, Mississippi, and South Carolina.

To relocate brewing operations from their Gulch location in Nashville to the Madison suburb, the owners, Linus and Lila Hall engaged T.W. Frierson Contractor, Inc. and our in-house architects Design Constructors, Inc. for the design-build project.

Site design challenges quickly arose as the property already had an existing bio-retention pond for two large neighboring buildings and we could not encroach on that area of the site. This made our site very limited as to where we could locate the main production facility, the new tasting room and the future building for "Embrace the Funk," Yazoo's sour beer brewing company. Fortunately, we were able to come up with a site plan that was focused around the tasting room and it's patio facing the Cumberland River. This provided the best possible solution, as there are plans for a future green way along the river, providing pedestrian and bike access to Yazoo's campus.

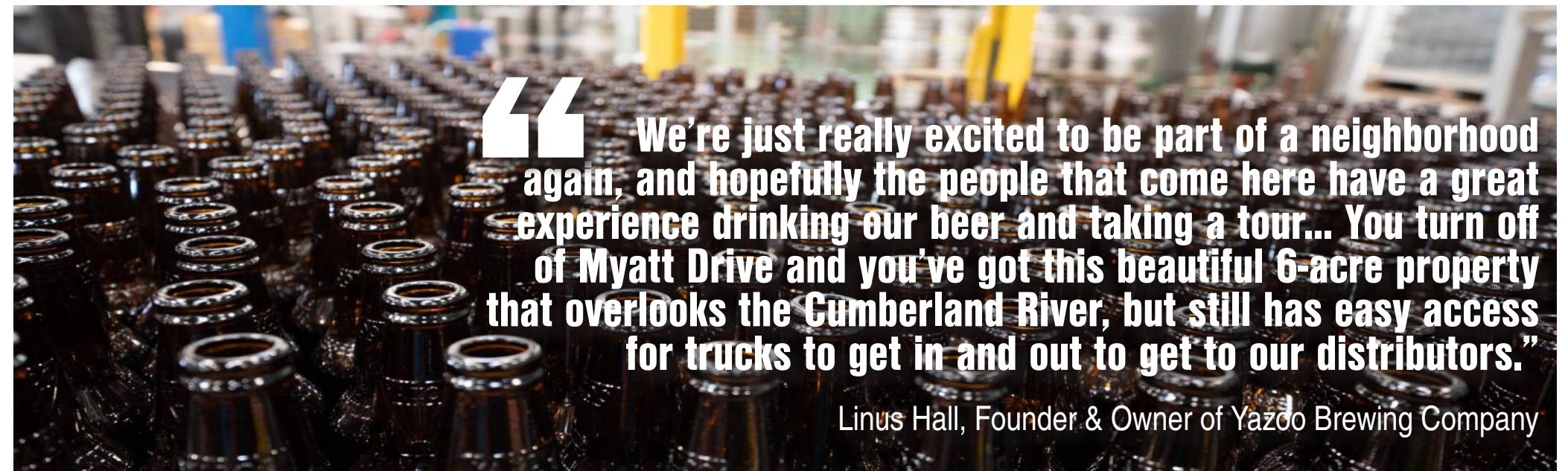
Working closely with the owners, the design-build team incorporated necessary process engineering and planning for relocation of existing equipment, process piping, and a new lab space to support growth of the company.

The tasting room design was inspired by Yazoo's past locations. The exterior brick design and window design is intended to be reminiscent of the Marathon building in downtown Nashville which was Yazoo's original home. The concrete counter top design was requested by the owners since they had this type of bar at both of Yazoo's previous locations and they wanted to continue with this theme. The interior finish and color scheme is also a combination of the aesthetic at Yazoo's past locations.

The new 30,000 square foot facility is about twice the size of the previous location in The Gulch and nearly triples their seating capacity in the tap room. With its new home, Yazoo has the capacity to double the output of their 2018 production of 25,000 barrels of beer as they continue to add equipment.

The new facility is also large enough to allow them to accommodate canning, which will be the first time that Yazoo has ever put their beer in cans for distribution. Yazoo will still put beer in their signature bottles, but now that they have a new location, they've upgraded their bottles by getting bottles made custom for the Brewery that have their logo, name, and location molded into the bottle itself.

This is the first time that Yazoo has been produced in a facility that was actually made for beer production.



“ We’re just really excited to be part of a neighborhood again, and hopefully the people that come here have a great experience drinking our beer and taking a tour... You turn off of Myatt Drive and you’ve got this beautiful 6-acre property that overlooks the Cumberland River, but still has easy access for trucks to get in and out to get to our distributors.”

Linus Hall, Founder & Owner of Yazoo Brewing Company



YAZOO BREWERY RELOCATES TO MADISON, TN

T.W. FRIERSON CONTRACTOR, INC. RAISED \$76,000+ FOR THE AMERICAN HEART ASSOCIATION

On August 26th we hosted our 19th Annual Golf Tournament benefiting the American Heart Association. With over 200 participants, our tournament has historically represented one of the largest single day fund-raisers for the American Heart Association of Greater Nashville.

We would like to take this opportunity to say THANK YOU to everyone who spent the day with us out at the golf course and to all of our sponsors who continue to support us in our commitment to raise heart health and stroke awareness with the American Heart Association. We couldn't do this without you!

Charitable Giving Update

We have exceeded our goal and donated over \$100,000 this past year. Recent donations have been made to Special Olympics Tennessee, Burns Cowboys, Agape Animal Rescue, Dickson County Youth Athletic Association, East Robertson Dixie Youth Baseball and Having Hope, Having Bipolar.

Having Hope, Having Bipolar



Special Olympics
Tennessee



**UPCOMING CHARITABLE EVENTS ANNUALLY SPONSORED BY
T.W. FRIERSON CONTRACTOR, INC.**

4:13 Strong Getup and Give Breakfast
September 26, 2019

Harvest Hands Fall to Table
October 18th, 2019

TWF Employees, if you would like to attend please contact swaggoner@twfrierson.com

Employee Spotlight



David Amond
Senior Project Manager

Hometown: Thompson Station, TN

If you could only eat one thing for a year, what would it be? BBQ

What's your favorite thing to do in the summer (or whatever season we are in) Fishing, Hunting, or Camping Outdoors. I also like to spend time at the gun range.

If you had to describe yourself in three words, what would it be? Father, Husband, Friend

Share one thing most people here don't know about you: I like to train hunting dogs. I mostly work with Labrador Retrievers, and work with duck hunting specifically.

You were just given a yacht. What would you name it? "Go Fun Me"

My biggest pet peeve is . . .the words "Hot Water Heater". If the water is already hot, why do you need to heat it?

What's the best dinner you ever had?
The steak dinner I had when I got back from spending 30 consecutive days in the Northwoods of Minnesota camping.

Who has been the biggest inspiration in your life? Why? My Father. He taught me to appreciate the outdoors – and how to hunt and fish. He also instilled a sense of pride and a work ethic that has followed me throughout my professional career. He was firm when he had to be, and was always fair.

Based on something you've already done, how might you make it into the Guinness Book of World Records? The number of times I've had to answer the question "Why?" from a 4-year old girl.

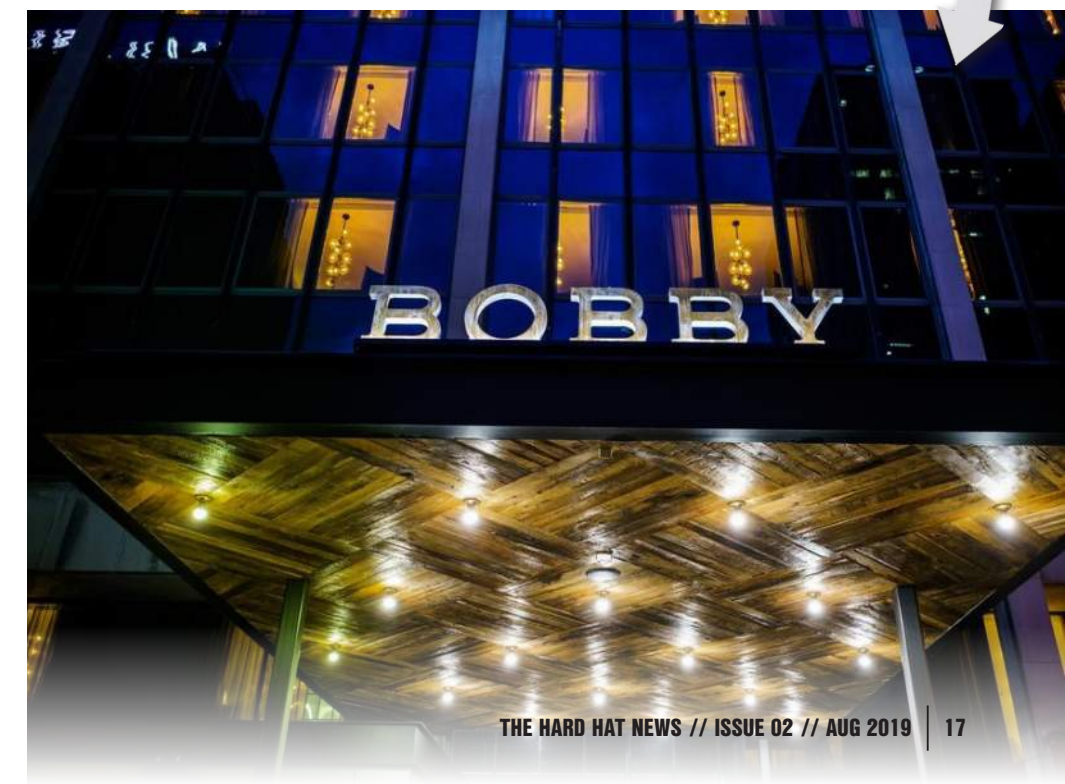
What's your favorite line from any movie? "I find your lack of faith disturbing"

What is your favorite sport, and which team of that sport do you cheer for? Predators Hockey! Let's Go Preds!

What was the best concert you went to? ZZ Top in 1989. The stage props were amazing, and laser shows were just getting cool.

What was your first job where you got paid by someone other than your parents? When I was 12, I had several yards in my neighborhood where I cut grass. I built a trailer that fit on my lawnmower so I could carry my gas, blower, trimmer, and tools from house to house.

What was the coolest, or most challenging project you've worked on?
Why? The most interesting project I worked on was the Bobby Hotel in Downtown Nashville. Formerly known as Wells Fargo Plaza, the 10-story structure was gutted and the floor plan was expanded on each floor, and an additional floor was added. The former office building was transformed into one of the city's most unique hotels, featuring 144 rooms and multiple food and beverage outlets. We even lifted an antique bus to the rooftop next to the pool.





35
ACTIVE PROJECTS

12
OF THOSE PROJECTS ARE
FOR REPEAT CLIENTS

5
ARE BUILDINGS FOR
TWF SUBCONTRACTORS

50%
OF OUR CURRENT WORK
IS FOR FRIENDS &
PARTNERS

REST IN PEACE ISIAH JAMES, YOU WILL BE MISSED



It is with heavy hearts that we say farewell to one of our TWF family members. On August 20th, Isiah James went to a better place.

Isiah was a graduate of the 4:13 Strong Program which is guided by the same chapter & verse from the book of Philippians. If you are so led; I would encourage you to read it.

Isiah was and always will be a beloved member of the 4:13 Strong family and our TWF family.

A core value of 4:13 is "Break the Mold." Isiah epitomized this, and in doing so inspired others to look past their circumstances, be brave, and never give up!

There may not be a better man in our TWF family than Richard Hayes who was the ultimate champion and advocate for Isiah. His humility and selflessness is unsurpassed. All of our love to you Richard for walking the walk vs talking the talk.

Isiah... We love you brother... and although you are so greatly missed, we will honor you by channeling your passion and convictions to create positive impacts on the lives of others, just as you have done for us.

In closing, that ray of sunshine bursting through the clouds is as brilliant as your smile and laughter, and will be the ray of hope we remember you by till we meet again my friend.

CONGRATULATIONS 2019 GRADUATING CLASS OF 4:13 STRONG!

T.W. Frierson Contractor, Inc. is proud to be a Job Partner for the 4:13 Strong organization.

4:13 Strong is a faith based Middle Tennessee program that radically transforms the lives of at-risk young men. By immersing them in an intensive six month program, 4:13 Strong provides a lifeline for them to succeed personally and professionally.

To learn more about 4:13 Strong and how you can get involved, visit their website.

www.413strong.org



Congratulations Madison & Jamal!
We're so proud of all you have accomplished and are glad you are a part of our TWF Family.

4:13
STRONG
BUILDING
BETTER MEN TO
BUILD A BETTER
NASHVILLE

On August 22, we hosted the men of 4:13 Strong at our office expansion job site. We had a great time visiting with them and showing them around.

Thank you to the T.W. Frierson team members who took time to mentor these young men. The time you spend with them is invaluable.



FOCUS ON THE FIELD

With client needs so diverse, we offer a full range of construction management, and design-build services. Our team of employee-owners combines highly skilled supervision, efficient construction methods, and accountable project management solutions to get the job done in the best possible way for our partners.



Dickson County Justice Center
Charlotte, Tennessee

ADVANCED TURF SOLUTIONS | NASHVILLE, TN

Tim Blakeney, Assistant Superintendent
Carlos Aldana, DSB Superintendent
Chuck Hall, Project Manager
Matthew Howell, DSB Project Manager
Lee Ann Watson, Project Manager Assistant
Sara Proctor, DSB Project Engineer

CDE LIGHTBAND PHASE 3 RENOVATION & ADDITION CLARKSVILLE, TN

Joe Slate, Superintendent
Andy Zimmerman, Senior Project Manager
Darlene Dwyer, Project Manager Assistant

CHANGE HEALTHCARE | NASHVILLE, TN

Scott Peterson, Superintendent
Jack Barrett, Project Manager
Darlene Dwyer, Project Manager Assistant

CHURCH PAPER | MADISON, TN

Tim Blankeney, Superintendent
Eric Bowman, Project Manager
Darlene Dwyer, Project Manager Assistant

COMPOSITES ONE | LEBANON, TN

Jeff Waggoner, Superintendent
Eric Bowman, Project Manager
Preston Hall, PCS Project Manager
Darlene Dwyer, Project Manager Assistant

COOPER STEEL SHIPPING BAY ADDITION SHELBYVILLE, TN

Randy Lane, Superintendent
Alan Quam, DSB Superintendent
Jack Barrett, Project Manager
Matthew Howell, DSB Project Manager
Sara Proctor, DSB Project Engineer
Darlene Dwyer, Project Manager Assistant

CUMBERLAND TRUCK ROAD & UTILITIES LEBANON, TN

Ray Eimerman, Assistant Superintendent
Eric Bowman, Project Manager
Darlene Dwyer, Project Manager Assistant

DICKSON COUNTY JUSTICE CENTER CHARLOTTE, TN

Tommy Manley, Superintendent
John French, Senior Project Manager
Darlene Dwyer, Project Manager Assistant

DYKE INDUSTRIES | MT. JULIET, TN

Jeff Waggoner, Superintendent
Julio Pineda, DSB Superintendent
Jack Barrett, Project Manager
Matthew Howell, DSB Project Manager
Sara Proctor, DSB Project Engineer
Lee Ann Watson, Project Manager Assistant

EMPIRE DISTRIBUTORS EXPANSION NASHVILLE, TN

Jason Watson, Superintendent
Preston Hall, Project Manager
Matthew Howell, DSB Project Manager
Sara Proctor, DSB Project Engineer
Lee Ann Watson, Project Manager Assistant

FURNITURE CONNECTION | CLARKSVILLE, TN

Tony Campos, Superintendent
Andy Zimmerman, Senior Project Manager
Darlene Dwyer, Project Manager Assistant

GOODWILL TENANT IMPROVEMENT NASHVILLE, TN

Tony Campos, Superintendent
Myles Ayers, Assistant Project Manager
Darlene Dwyer, Project Manager Assistant

GRANGES 11K OFFICE EXPANSION HUNTINGDON, TN

Tony Tidwell, Superintendent
Carlos Aldana, DSB Superintendent
Andy Zimmerman, Senior Project Manager
Matthew Howell, DSB Project Manager
Sara Proctor, DSB Project Engineer
Lee Ann Watson, Project Manager Assistant

**“T.W. FRIERSON IS IN
CLASS OF THEIR OWN.”**

- Brian Taylor, CDE Lightband -



HORMANN LLC MANUFACTURING | SPARTA, TN

Shannon Patterson, Superintendent
Alan Quam, DSB Superintendent
Griffin Jones, Assistant Superintendent
Brent Edwards, Senior Project Manager
Matthew Howell, DSB Project Manager
Sara Proctor, DSB Project Engineer
Darlene Dwyer, Project Manager Assistant

KENNY PIPE | MURFREESBORO, TN

Randy Lane, Superintendent
Alan Quam, DSB Superintendent
Chuck Hall, Project Manager
Matthew Howell, DSB Project Manager
Sara Proctor, DSB Project Engineer
Lee Ann Watson, Project Manager Assistant

KRAFT DRIVE WESTERN ADDITION | NASHVILLE, TN

Cliff Manley, Superintendent
Eric Bowman, Project Manager
Darlene Dwyer, Project Manager Assistant

NASHVILLE FAIRGROUNDS EXPO CENTER | NASHVILLE, TN

Alan Quam, DSB Superintendent
Chuck Hall, Project Manager
Matthew Howell, DSB Project Manager
Sara Proctor, DSB Project Engineer
Darlene Dwyer, Project Manager Assistant

NES 11TH AVE SUBSTATION & PARKING EXPANSION | NASHVILLE, TN

Jay Hill, Superintendent
Chuck Hall, Project Manager
Darlene Dwyer, Project Manager Assistant

NISSAN SCRAP SYSTEM | SMYRNA, TN

Jorge Leal, Superintendent
Luke Maddox, Senior Project Manager
Lee Ann Watson, Project Manager Assistant

NISSAN STAMPING WAREHOUSE | SMYRNA, TN

Jorge Leal, Superintendent
Luke Maddox, Senior Project Manager
Lee Ann Watson, Project Manager Assistant

NISSAN STAMPING BAY 6 | SMYRNA, TN

Jorge Leal, Superintendent
Luke Maddox, Senior Project Manager/QAQC
Lee Ann Watson, Project Manager Assistant

RITCHIE BROS. | ATLANTA, GA

Dave Godbey, Superintendent
Brent Edwards, Senior Project Manager
Darlene Dwyer, Project Manager Assistant

SIGNATURE HANGAR 4 & 7 RENOVATIONS & EXPANSION | NASHVILLE, TN

Dave Godbey, Superintendent
Chuck Hall, Project Manager
Lee Ann Watson, Project Manager Assistant

STATESTREET | MT. JULIET, TN

Donnie Patterson, Superintendent
Jack Barrett, Project Manager
Darlene Dwyer, Project Manager Assistant

TOGO OFFICE BUILDOUT | MT. JULIET, TN

Zac Watson, Superintendent
Jack Barrett, Project Manager
Lee Ann Watson, Project Manager Assistant

AMERICAN WONDER PORCELAIN WAREHOUSE LEBANON, TN

Jeff Smith, Superintendent
Ray Woodby, DSB Superintendent
Preston Hall, PCS Project Manager
Matthew Howell, DSB Project Manager
Andy Zimmerman, Project Executive
Sara Proctor, DSB Project Engineer
Darlene Dwyer, Project Manager Assistant



FRIERSON

T.W. Frierson Contractor, Inc.



DCi



WE HOPE YOU CAN JOIN US FOR OUR
ANNUAL SUBCONTRACTOR & SUPPLIER
OPEN HOUSE



DATE
OCT 22ND
2019

LOCATION
2971 KRAFT DRIVE
NASHVILLE, TN 37204

TIME
4:00 to
6:00PM

T.W. Frierson Contractor, Inc.
2971 Kraft Drive Nashville, TN 37204
615.367.1333 • www.twfrierson.com • [@twfrierson](https://twitter.com/twfrierson)

